

**PFAFF**  
silberblau



**STAHL**  
CraneSystems

**CMCO**  
INTELLIGENT MOTION  
Columbus McKinnon



**Yale**

Our expertise  
**Electric Hoists**

# Our expertise

## Electric Hoists

Columbus McKinnon's portfolio of electric chain hoists and electric wire rope winches are renowned for their strength and performance across the lifting and material handling industries. They are available in a wide range of capacities with functions and specifications to meet all customer requirements. For our hoists, we offer everything from a simple auxiliary hoist for assembly in construction sites to specialized industrial equipment for explosion proof environments. From the useful winch for the construction sector, efficient conveying applications through rope winches, industry winches for the toughest applications - even in the stage area - to wire rope hoists of all kinds for crane construction.

### Yale® CPV

#### Electric chain hoist with suspension hook or with integrated trolley

#### Capacity 125 - 5000 kg

The electric chain hoist CPV combines modern design and technical innovation. A robust construction makes the series a versatile tool for professional applications.



### Yale® CPEF

#### Electric chain hoist with suspension hook or with integrated trolley

#### Capacity 1600 - 10000 kg

The CPEF series is a range of high quality products for professional applications. They are highly efficient and engineered for a long working life.

### STAHL CraneSystems® ST

#### Electric chain hoist with suspension hook or with trolley

#### Capacity 125 - 6300 kg

Users, crane manufacturers and systems manufacturers appreciate the robust classic which proves itself in operation day after day. It is powerful, reliable and undemanding as regards maintenance and power consumption.



More information about electric chain hoists.

## Yale<sup>®</sup> Mtrac

### Endless winch, mobile

### Capacity 66 - 1000 kg

The Yale *Mtrac*<sup>®</sup> endless winch combines state-of-the-art industrial design with technical innovation.



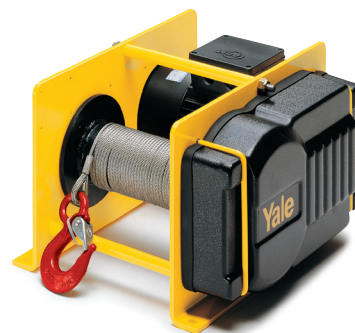
More information about electric wire rope winches.

## Yale<sup>®</sup> RPE

### Electric wire rope winch

### Capacity 250 - 2000 kg

RPE's compact, practical cube design and universal rope lead-offs allow individual applications in almost any position for lifting and pulling loads.

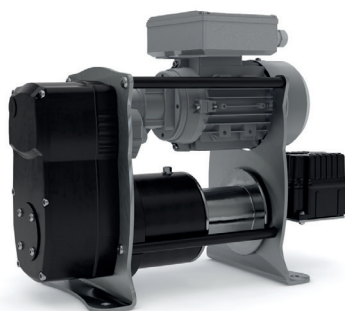


## PF<sup>®</sup> silberblau THETA

### Electric wire rope winch

### Capacity 100 kg

The compact Pfaff-silberblau THETA series offers reliable safety. It is suitable for a wide range of applications and very easy to use. In accordance with the accident prevention regulations DGUV V54 (BGV D8) with special release for static suspension of loads above persons.



## PF<sup>®</sup> silberblau BETA

### Electric wire rope winch

### Capacity 250 - 7500 kg

The robust and elegant electric wire rope winches BETA EL are used for lifting, lowering and pulling of all types of loads in all applications.



## STAHL<sup>®</sup> CraneSystems

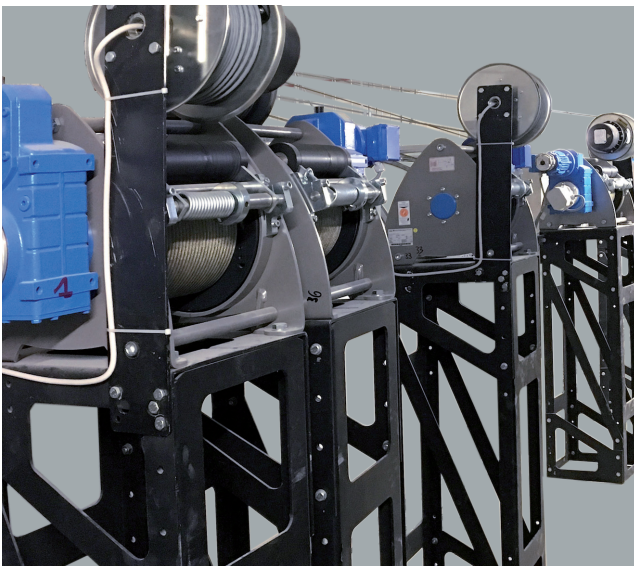
### Electric wire rope hoist

### Capacity up to 160000 kg

The wire rope hoist programme is used around the world in many different applications. Compact, strong, particularly maintenance-friendly and ideal when it comes to combining quality, flexibility and performance. The module system enables almost unlimited combinations of the components.



More information about electric wire rope hoists.



**At Columbus McKinnon you will find the right hoist for your application!  
Customised solutions are also possible.**



**Our CMCO branches at a glance!**

Visit: [www.cmco.com](http://www.cmco.com)

Follow: [in](#) [ig](#) [tv](#) [yt](#) [fb](#)



STAHL CraneSystems, Magnetek, Pfaff-silberblau, Duff-Norton, Yale, Dornier, CM and Montratec are brands of the Columbus McKinnon Group.

Columbus McKinnon EMEA GmbH · Yale-Allee 30 · 42329 Wuppertal, Germany · T +49 202 693 59 - 0 · info.wuppertal@cmco.eu

