



By Columbus McKinnon

Screw jacks for highest demands

**Precise, reliable
and durable**

Standardized and customer-specific solutions
for lifting, lowering, tilting and shifting

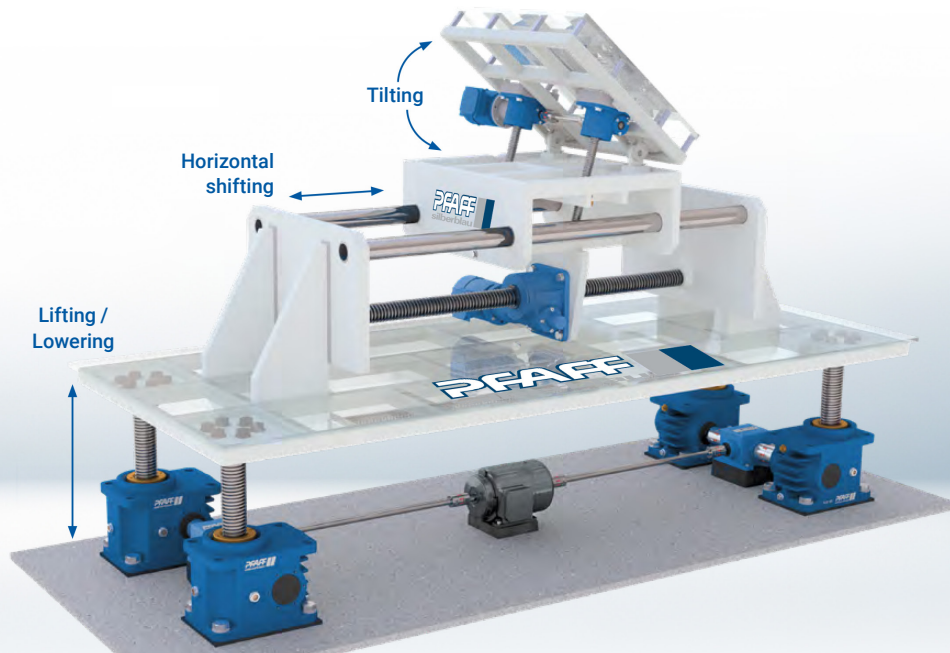


Quality for the highest demands

Engineers around the world rely on our leading **Pfaff-silberblau worm gear screw jacks** because they set the standard in terms of **precision, reliability and durability**.

Our gearboxes master a wide range of challenges – from **lifting and lowering** to **tilting and shifting**. Our wide-ranging product portfolio ensures reliable coverage of all common applications and industry requirements.

- The elements can be individually configured with our modular system
- Allow multi-spindle systems to run synchronously
- Maximum safety thanks to self-locking safety catches
- Low energy requirement leads to low operating costs
- Also suitable for use in harsh and extreme conditions



Our screw jacks in comparison

	MERKUR	SHE	SHE-S	HSE	SHG
Loads up to 500 kN	✓	✓	✓	✓	✓
Loads from 500 kN		✓		✓	
Trapezoidal spindle	✓	✓	✓	✓	✓
Ball screw				✓	
Grease lubricated	✓	✓	✓	✓	✓
Oil-lubricated				✓	✓
Drive speed up to 1500 rpm	✓	✓	✓		
Drive speed up to 3000 rpm				✓	✓
Stainless steel			✓		
Accessories / Attachments	✓	✓	✓	✓	✓



Can be used in accordance with Directive 2014/34/EU (ATEX)

MERKUR SERIES



MERKUR

Basic screw jack

Slow and medium lifting speeds

The MERKUR series has a cubic design and the machining on all sides makes it easy to align the gearboxes during installation.

MERKUR screw jacks are used where loads have to be positioned with moderate duty cycles and low dynamics.

Left: Lifting spindle | Right: Rotating spindle



Features

- 9 different sizes
- Lifting forces from 5 to 500 kN
- Drive speed up to 1500 min⁻¹
- Self-locking trapezoidal screw
- Grease-lubricated design
- Worm gear in two gear ratios (normal „N“ and slow „L“)
- Machining on all sides enables easy alignment
- Identical to standard European versions
- Case-hardened and ground worm shaft



SHE SERIES



SHE

Standard screw jack

Slow and medium lifting speeds

The robust SHE series can be used wherever high loads need to be precisely positioned and lifted at medium work cycles and moderate lifting speeds.

Left: Lifting spindle | Right: Rotating spindle

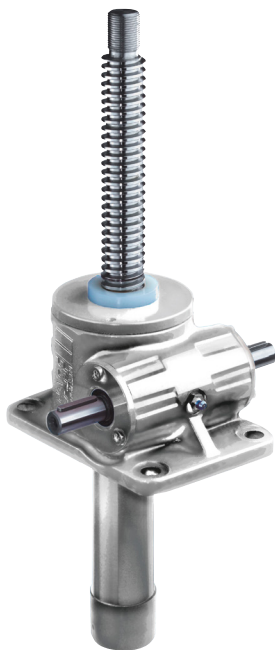


Features

- 13 different sizes
- Lifting forces from 5 to 2000 kN
- Drive speed up to 1500 min⁻¹
- Self-locking trapezoidal screw
- Grease-lubricated design
- Worm gear in two gear ratios (normal „N“ and slow „L“)
- Case-hardened and ground worm shaft



SHE-S SERIES



SHE-S (Stainless steel)

Standard screw jack

Slow and medium lifting speeds

The stainless SHE-S series was specially developed as a stainless steel version for outdoor use or under aggressive, critical environmental conditions.

Left: Lifting spindle | Right: Rotating spindle

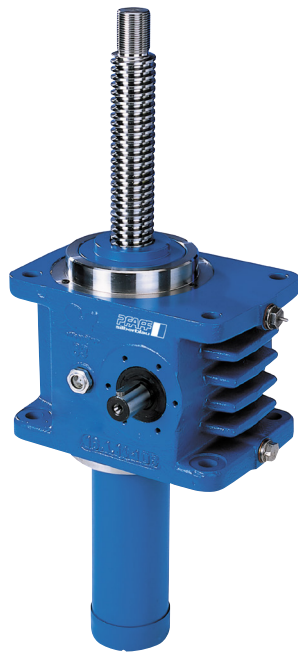


Features

- 4 different sizes
- Lifting forces from 30 to 200 kN
- Drive speed up to 1500 min⁻¹
- Self-locking trapezoidal screw
- Grease-lubricated design
- Worm gear in two gear ratios (normal „N“ and slow „L“)
- Case-hardened and ground worm shaft
- Completely stainless



HSE SERIES



HSE

High performance screw jack

Slow and medium lifting speeds

The HSE high-performance worm gear screw jacks have been specially developed for dynamic use at low and medium lifting speeds and an increased duty cycle. The spherical graphite iron housing with cast cooling fins is designed to ensure a high level of heat dissipation into the environment.

Left: Lifting spindle | Right: Rotating spindle



Features

- 8 different sizes
- Lifting forces from 5 to 1000 kN
- Drive speed up to 3000 min⁻¹
- Self-locking trapezoidal screw
- Separate lubrication circuits:
 - Trapezoidal spindle grease-lubricated
 - Worm gear oil-lubricated
- Worm gear in two gear ratios (normal „N“ and slow „L“)
- Patented gear design with distributed heat zones
- Case-hardened and ground worm shaft



SHG SERIES



SHG

Quick lifting screw jack

High lifting speeds

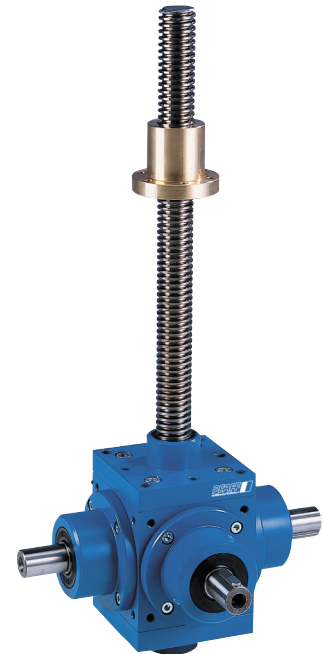
High efficiency and a long service life are achieved through the use of a spiral-toothed bevel gearbox. The SHG series drives are used in areas that require high dynamics and long duty cycles.

Left: Lifting spindle | Right: Rotating spindle



Features

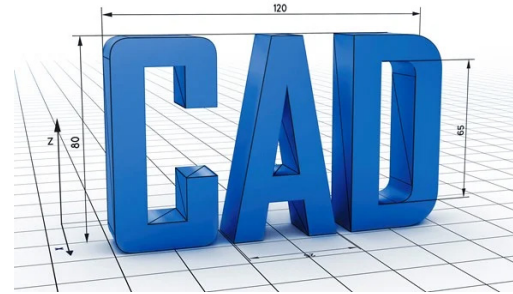
- 4 different sizes
- Lifting forces from 15 to 90 kN
- Drive speed up to 3000 min⁻¹
- Self-locking trapezoidal screw
- Separate lubrication circuits:
 - Trapezoidal screw grease-lubricated
 - Oil-immersion lubricated bevel bearing gearbox
- Bevel bearing gearbox in two transmission ratios (2:1 and 3:1 depending on version)
- Case-hardened and ground gearing



Screw jacks CAD configurator

Our configurator gives you access to **2D/3D CAD data** of our **worm gear screw jacks** in various formats. Another option is to transfer data directly into your CAD system using our **Click2CAD toolbox**.

Similar to a digital shopping cart, any number of CAD models can be saved and then downloaded or sent by e-mail.



Baureihe SHE Abmessungen: Bauart 1

Baugröße	Abmessungen SHE: Bauart 1, Standard, Teil 1			
	0,5	1,1	1,1	5,1
Spindel	Tr 18x0,5	Tr 24x1,1	Tr 30x1,1	Tr 40x2,1
A	20	20	20	20
B	109,5	124	130,5	130,5
B1	35,5	54	45	63
C	22	35	45	63
D	81,5	100	105	120
E	115	150	150	180
F	80	80	80	80
G	9	9	9	14
H	10	14	14	16
H 1 kg	27	35	45	45,2
K 2	—	58	52	65
L	32,5	65	—	—
L 1	22	18	—	110,5
M	73	100	—	190
N	120	140	—	—
H	85	88	—	109,5
D Ø	75,5	79	—	56x16
D	3x3x20	5x5x16	—	—
S	—	—	—	38
S	—	—	—	5,5
S	—	—	—	8,5
S	—	—	—	40
T	29	—	—	49
T	—	13	—	—



Columbus McKinnon Engineered Products GmbH

Am Silberpark 2-8 | 86438 Kissing | Germany

Tel +49 8233 2121-0 | info.kissing@cmco.eu

