

Drawing number**03 438 24 13 0**

Stromlaufplan

| | | |
|----------------------------------|--------------------------------|--------------|
| Control / Steuerung | SH3 | |
| Hoist Motor / Hubmotor | 12/2H33, 12/2H42 | |
| Type / Ausführung | B (control for crane customer) | |
| Overload Device / Lastwächter | SLE3 | |
| Voltage / Spannung | 208-230V / 110/120V 60Hz | |
| Fuses / Sicherungen | F41-43 | 10A Class CC |
| Fuses / Sicherungen | main fuse | 30A Class CC |
| by customer / bauseits | control fuse | 1A |

| Document Dokument | Sheet Blatt |
|---|----------------|
| BILL OF MATERIALS GERÄTELISTE | 1 (1) |
| POWER SUPPLY STROMVERSORGUNG | 1 (9) |
| HOIST HUBWERK | 2 (9) |
| TROLLEY FAHRWERK | 4 (9) |
| TERMINAL DIAGRAM X16 KLEMMENPLAN X16 | 6 (9) |
| LOCATION DIAGRAM A16 AUFBAUPLAN A16 | 8 (9) |
| CABEL DIAGRAM KABELPLAN | 9 (9) |

| | | | |
|--------------|-------------------|-----------------------|--------------|
| Date / Datum | Dept. / Abteilung | Designer / Bearbeiter | Page / Seite |
| 13.03.2019 | G-Plattform | Schnell | 1/1 |

Drawing number

03 438 24 13 0

Stromlaufplan

BILL OF MATERIALS

| Lokcat. Ort | Refer. Referenz | Qty. Anzahl | Spezifikation Typ | Discription Benennung | Fabricate Hersteller | Item Code Sach-Nr. |
|----------------|--------------------|----------------|----------------------|--|-------------------------|-----------------------|
| +A16 | -A275 | 1 | SLE3 110/120V | OVERLOAD DEVICE LASTWÄCHTER | | 579 770 0 |
| +A16 | -F41-F43 | 3 | USBCC1 | FUSE HOLDER SICHERUNGSTRENNER | FERRAZ | 510 078 0 |
| | | 3 | ATDR10 10x38 10A | FUSE LINK SCHMELZEINSATZ | FERRAZ | 510 084 0 |
| +A16 | -G21 | 1 | 1/024.000.6 3A | RECTIFIER GLEICHRICHTER | MAYR | 04 430 00 88 0 |
| +A16 | -K20 | 1 | LC1-D25 G7 | CONTACTOR SCHÜTZ | SCHNEIDER | 582 043 0 |
| | | 1 | LAD-N11G | AUXILIARY CONTACT BLOCK HILFSSCHALTERBLOCK | SCHNEIDER | 582 069 0 |
| +A16 | -K23-K24 | 2 | LC1-D25 G7 | CONTACTOR SCHÜTZ | SCHNEIDER | 582 043 0 |
| | | 2 | LAD-N22G | AUXILIARY CONTACT BLOCK HILFSSCHALTERBLOCK | SCHNEIDER | 582 072 0 |
| +A16 | -K25 | 1 | LC1-D258 G7 | CONTACTOR SCHÜTZ | SCHNEIDER | 582 047 0 |
| +A16 | -K41-K42 | 1 | LC2-K09 G7 | CONTACTOR SCHÜTZ | SCHNEIDER | 579 472 0 |
| +A16 | -K45 | 1 | LC1-K09008 G7 | CONTACTOR SCHÜTZ | SCHNEIDER | 579 473 0 |
| +A16 | -S220 | 1 | GE-S125.04 | GEAR-TYPE LIMIT SWITCH GETRIEBEENDSCHALTER | STROMAG | 580 005 0 |
| +A16 | -S260/-S261 | 2 | E 215-16-11B | PUSH BUTTON DRUCKTASTER | ABB | 578 553 0 |
| +A16 | -X16 | 1 | WPE16 | PE-TERMINAL SCHUTZLEITERKLEMME | WEIDMUELLER | 519 518 0 |
| | | 3 | WDU16 | TERMINAL KLEMME | WEIDMUELLER | 519 513 0 |
| | | 1 | WPE10 | PE-TERMINAL SCHUTZLEITERKLEMME | WEIDMUELLER | 519 517 0 |
| | | 6 | WDU4/ZR | TERMINAL KLEMME | WEIDMUELLER | 519 522 0 |
| | | 3 | A2C 2.5 PE | PE-TERMINAL SCHUTZLEITERKLEMME | WEIDMUELLER | 519 634 0 |
| | | 17 | A2C 2.5 | TERMINAL KLEMME | WEIDMUELLER | 519 633 0 |
| +A16 | -X16.1 | 2 | A2C 2.5 PE | PE-TERMINAL SCHUTZLEITERKLEMME | WEIDMUELLER | 519 634 0 |
| | | 7 | A2C 2.5 | TERMINAL KLEMME | WEIDMUELLER | 519 633 0 |
| +TR1 | -B275 | 1 | | LOAD SENSOR LASTSENSOR | | |
| +TR1 | -M21 | 1 | | HOIST MOTOR HUBMOTOR | | |
| +TR1 | -M41 | 1 | | TROLLEY MOTOR KATZFAHRMOTOR | | |
| +TR1 | -S228 | 1 | | BLOCK OPERATED UPPER LIMT SWITCH ENDSCHALTER (US) | | |
| +TR1 | -S420 | 1 | | TROLLEY LIMIT SWITCH KATZFAHRENDSCHALTER | | |

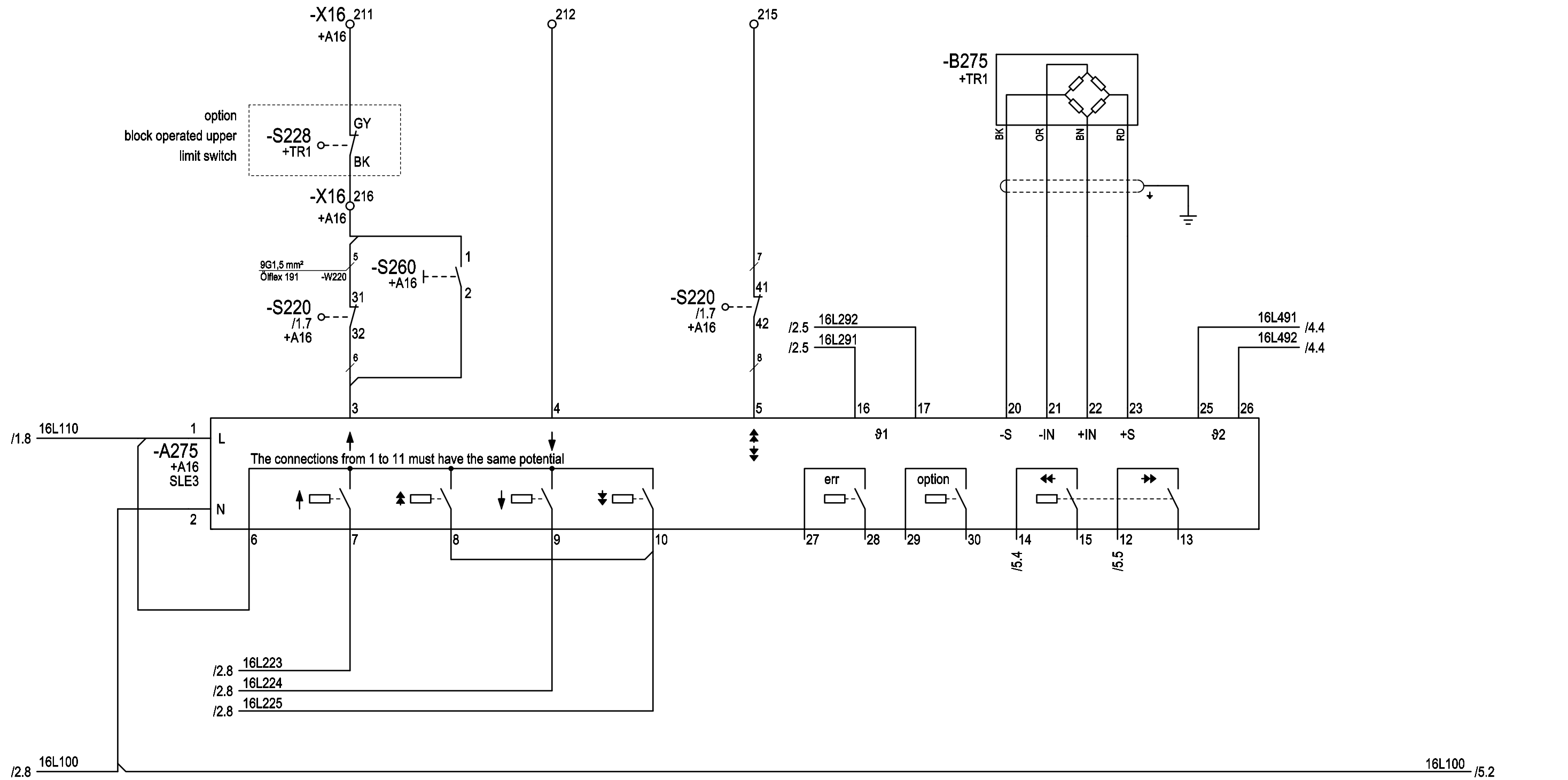
| | | | |
|--------------|-------------------|-----------------------|--------------|
| Date / Datum | Dept. / Abteilung | Designer / Bearbeiter | Page / Seite |
| 13.03.2019 | G-Platform | Schnell | 1/1 |

hoisting
heben

lowering
senken

fast
schnell

temperature / load monitoring
Temperatur- / Lastüberwachung



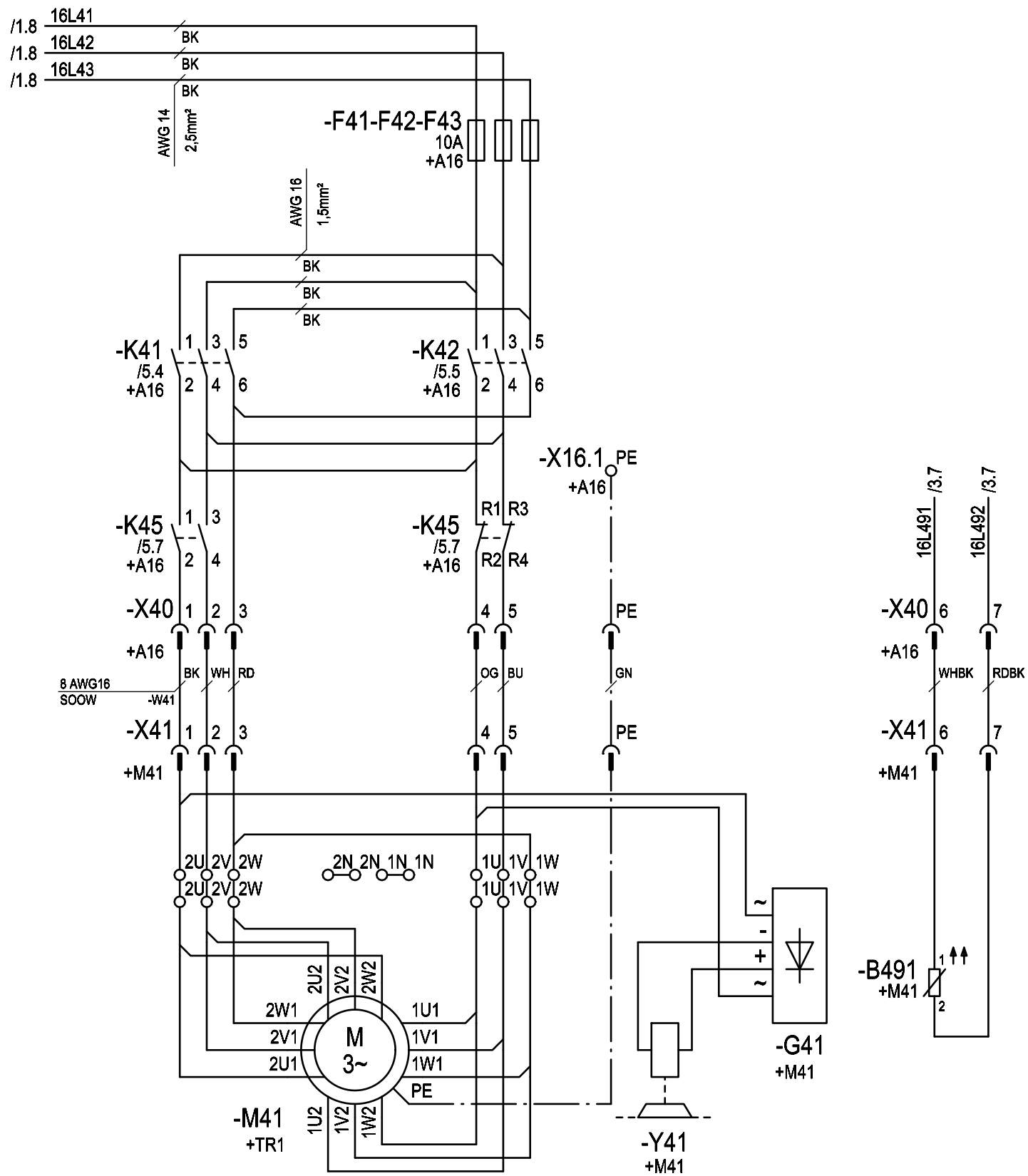
| Changes | Date | Name | Date | Name |
|---------|----------|---------|------------|---------|
| | 13.03.19 | Schnell | 23.10.17 | Huhnd. |
| | | | 24.10.17 | Schnell |
| | | | 24.10.17 | Huhnd. |
| Rev. | | Plot | 12.03.2019 | Rep. by |

| | |
|----------|--------|
| Rep. for | Origin |
|----------|--------|

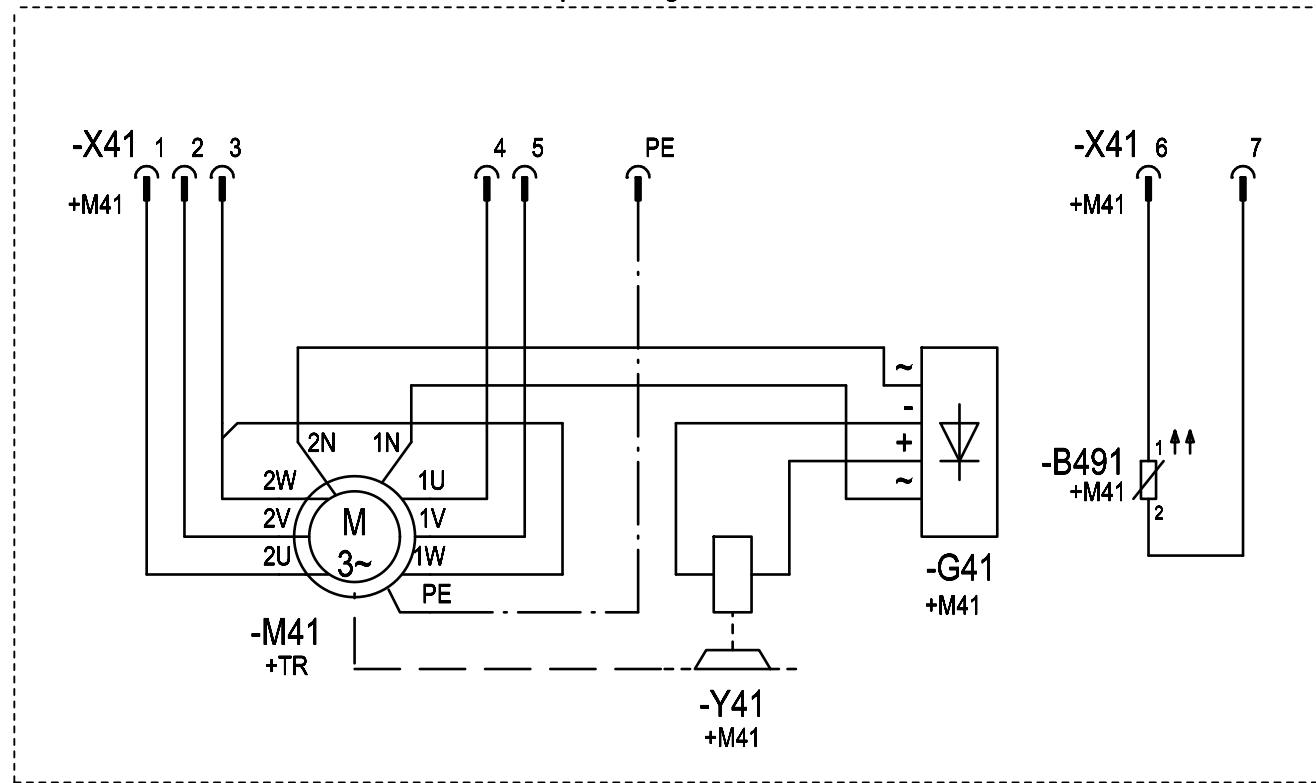
| | | | |
|--------------------------------------|--|-----------|-------------------|
| Copyright according to DIN ISO 16016 | circuit diagram SH3 H33/H42 type B SLE3 hoisting | Order No. | Serial No. xxxxxx |
|--------------------------------------|--|-----------|-------------------|

| | |
|----------------|---------------|
| = | |
| + | |
| 03 438 24 13 0 | Page: 3 of: 9 |

cross travel motor
Katzfahrmotor



Note! Connection at 208V supply voltage.
Hinweis! Anschluss bei 208V Betriebsspannung.



| Changes | Date | Name | Date | Name |
|---------|----------|---------|------------|---------|
| | 13.03.19 | Schnell | 23.10.17 | Huhnd. |
| | | | 24.10.17 | Schnell |
| | | | 24.10.17 | Huhnd. |
| Rev. | | Plot | 12.03.2019 | Rep. by |

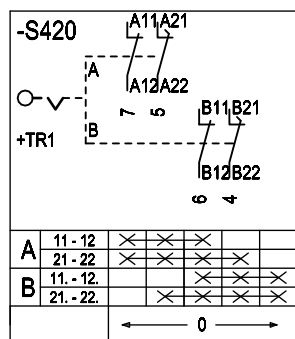
| | | |
|----------|--------|--------------------------------------|
| Rep. for | Origin | Copyright according to DIN ISO 16016 |
|----------|--------|--------------------------------------|

| | |
|-------------------------|-------------------|
| circuit diagram | = |
| SH3 H33/H42 type B SLE3 | + |
| trolley | |
| Order No. | Serial No. xxxxxx |

| | |
|----------------|---------|
| 03 438 24 13 0 | Page: 4 |
| | of: 9 |

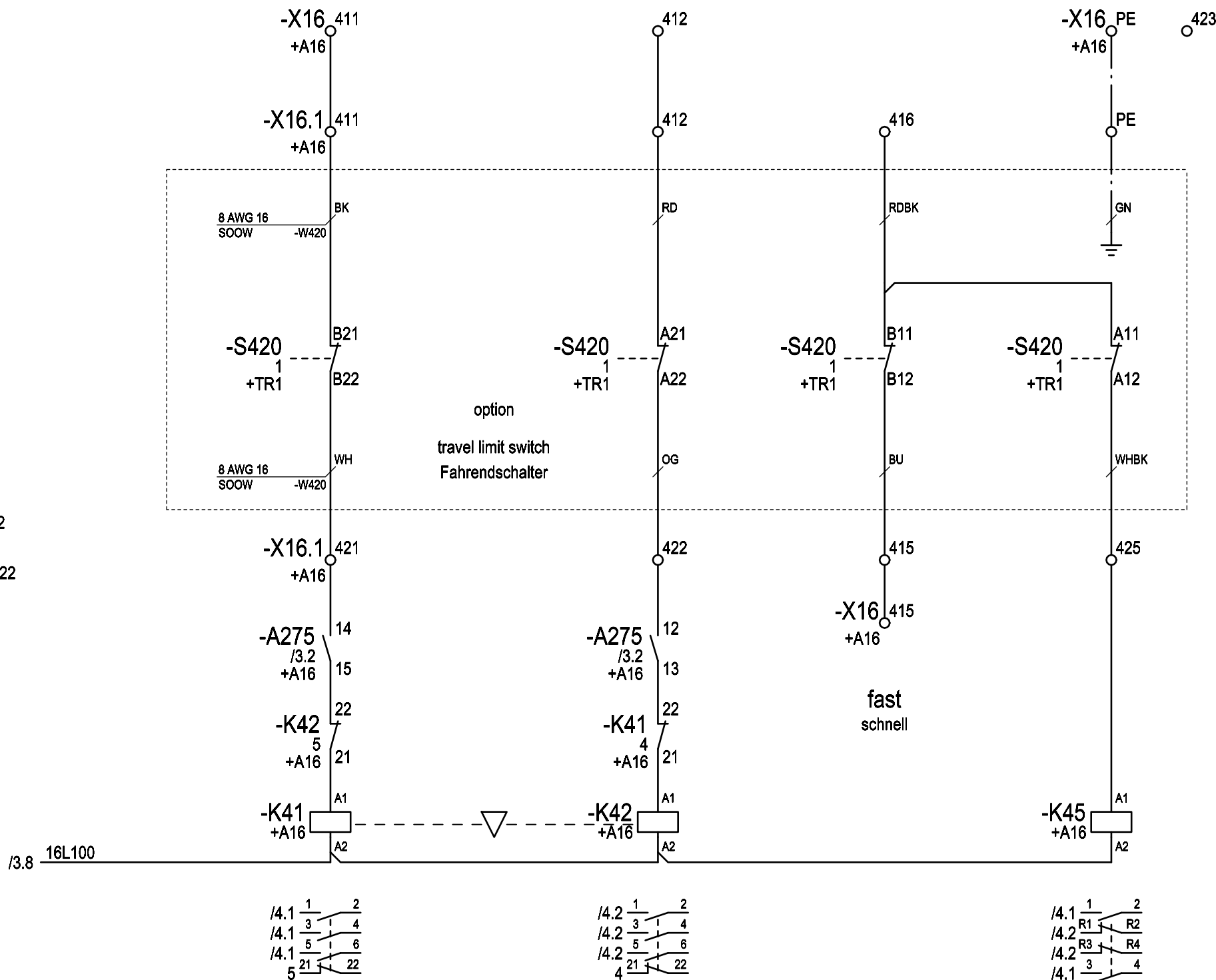
left
links

right
rechts



Attention!

with double-rail crab: change contact A21-A22 and B21-B22
 Bei Obergurttfahrwerken: Kontakte A21-A22 und B21-B22 tauschen



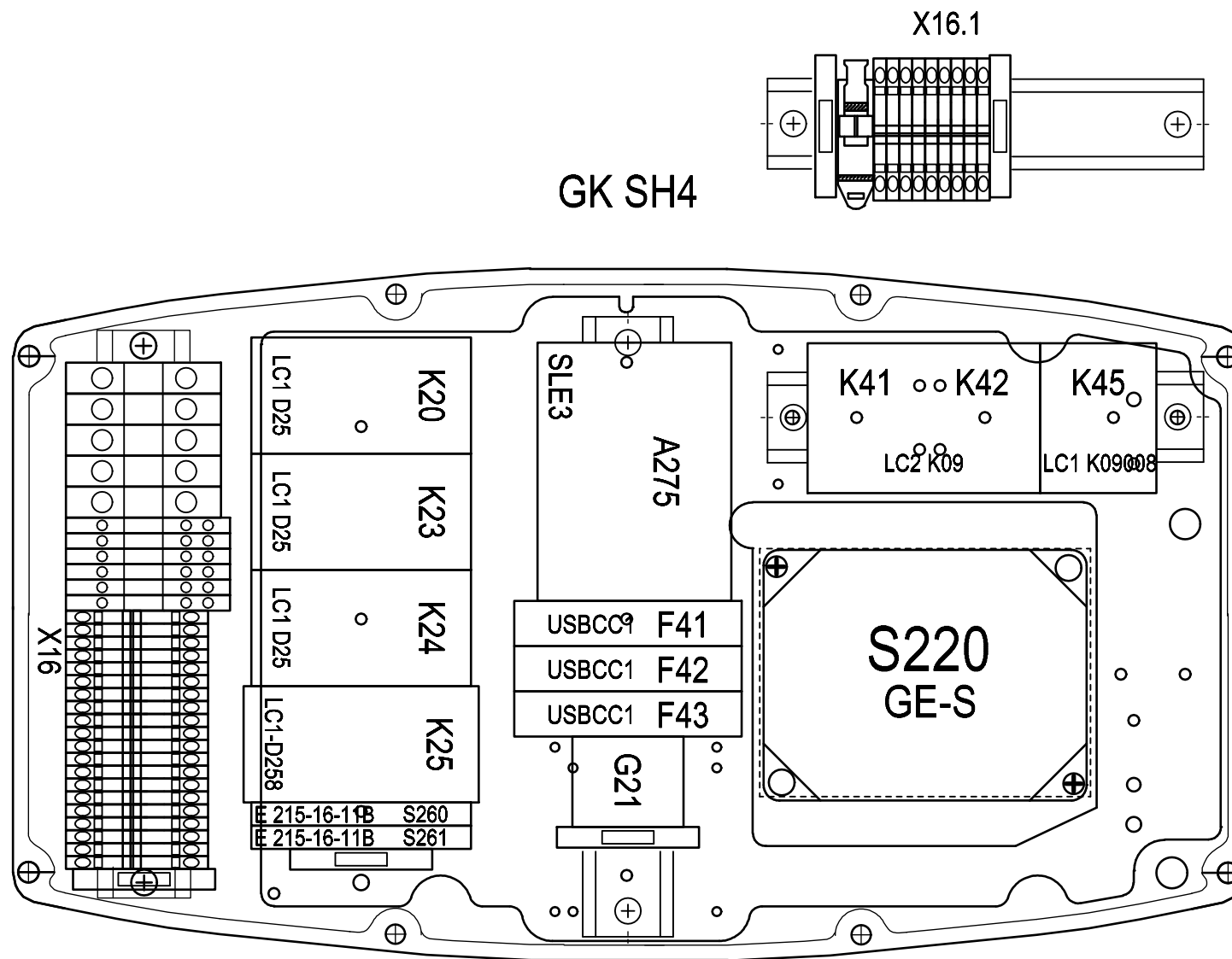
| Changes | Date | Name | Date | Name |
|---------|----------|---------|------------|---------|
| | 13.03.19 | Schnell | 23.10.17 | Huhnd. |
| | | | 24.10.17 | Schnell |
| | | | 24.10.17 | Huhnd. |
| Rev. | | Plot | 12.03.2019 | Rep. by |

| | |
|----------|--------|
| Rep. for | Origin |
|----------|--------|

Copyright according to DIN ISO 16016

circuit diagram
SH3 H33/H42 type B SLE3
trolley

| | |
|----------------|---------|
| = | |
| + | |
| 03 438 24 13 0 | Page: 5 |
| | of: 9 |



GK SH4

X16.1

X16

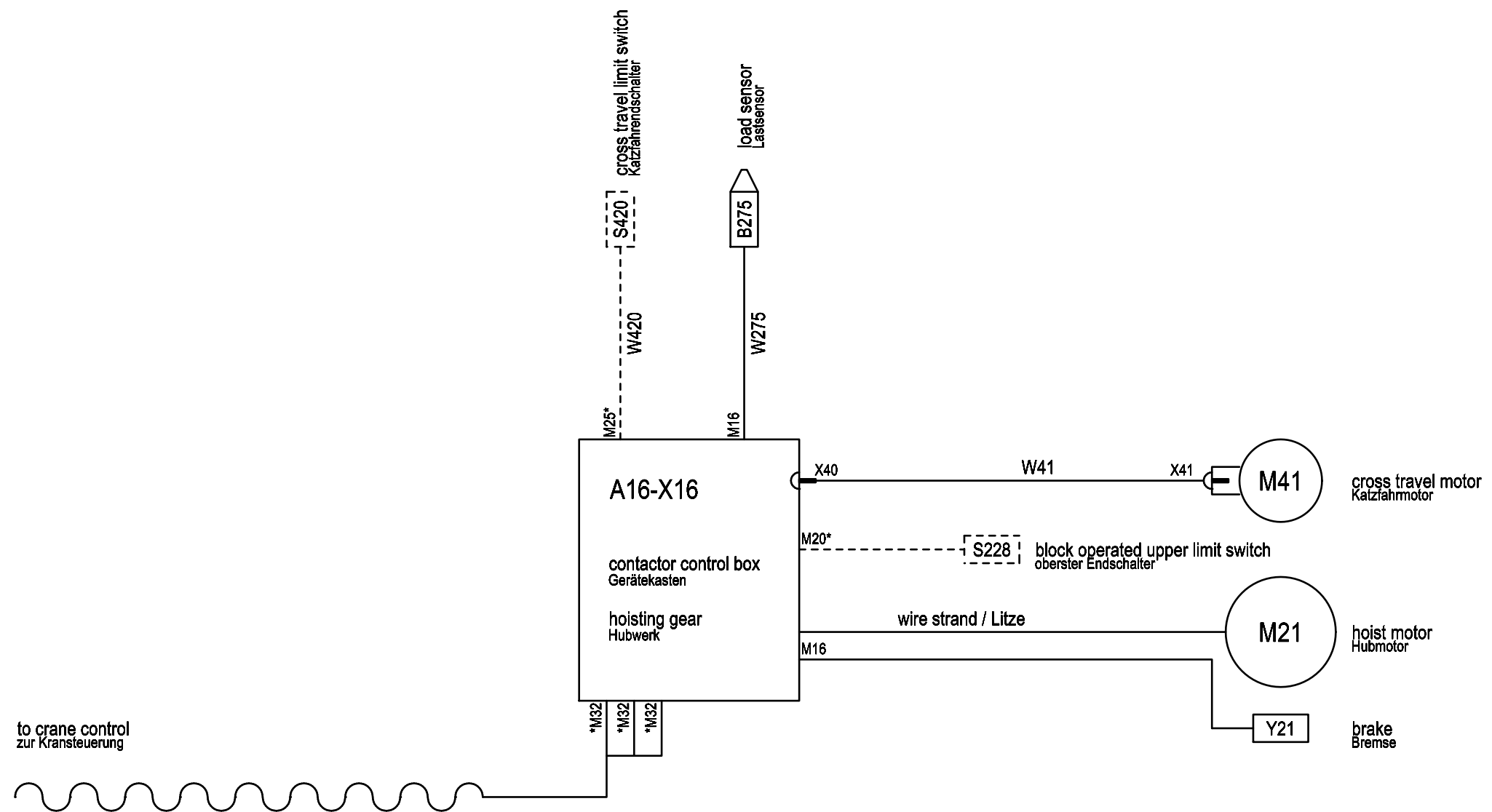
| Rev. | Changes | Date | Name | Date | Name |
|------|---------|----------|---------|------------|---------|
| | | 13.03.19 | Schnell | 23.10.17 | Huhnd. |
| | | | | 24.10.17 | Schnell |
| | | | | 24.10.17 | Huhnd. |
| | | | | 12.03.2019 | |

| | | | |
|------|---------|----------|--------|
| Plot | Rep. by | Rep. for | Origin |
|------|---------|----------|--------|

Copyright according to
DIN ISO
16016

location diagram
SH3 H33/H42 type B SLE3
+A16

=
+
03 438 24 13 0
Page: 8
of: 9



* blind plug
Blindstopfen

| | | | | | | | | | |
|---------|--|----------|---------|------------|---------|--|--|----------------|-------------------|
| Changes | | Date | Name | Date | Name | Copyright according to DIN ISO 16016 | cable diagram SH3 H33/H42 type B SLE3 | = | |
| | | 13.03.19 | Schnell | 23.10.17 | Huhnd. | | | + | |
| | | | Proved | 24.10.17 | Schnell | | | 03 438 24 13 0 | |
| | | | Release | 24.10.17 | Huhnd. | | | Page: 9 | |
| Rev. | | | Plot | 12.03.2019 | Rep. by | Rep. for | Origin | Order No. | Serial No. xxxxxx |
| | | | | | | | | of: 9 | |